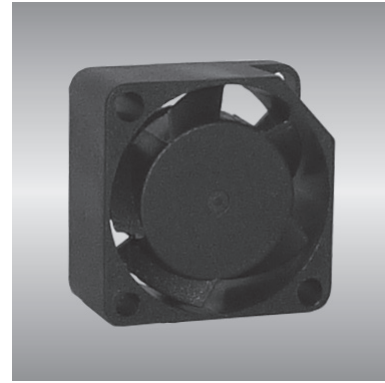


20 AG series

x20x10mm



General Specifications

- Motor : 4 Poles brushless DC motor
- Frame & Impeller : Plastic(UL 94V-0)
- Storage temperature : -40° to +75°
- Operating temperature : -10° to +70°

Major Characteristic Parameters

Model	*Bearing System	Rated Voltage	Operating Voltage Range	Rated Current	Rated Speed	Maximum Air Flow		Maximum Static Pressure		Sound Level	Weight
Part NO.	B / S / F	V	V	A	RPM	m ³ /min	CFM	mm-H ₂ O	In-H ₂ O	dBA	g
AGE02010_05L	S	5	4.5~5.5	0.16	14000	0.042	1.5	5.08	0.20	24	5.5
AGE02010_05M	S	5	4.5~5.5	0.21	17000	0.053	1.9	7.36	0.29	30	5.5

*Bearing system B: Two Ball Bearing F: Fluid Bearing S: Sleeve Bearing



深圳市冠世电机

